

TONY + WILL





A pairing of modern sophistication and classic cool. Inspired by contemporary culture and effortless style, TONY+WILL tell more than just time.

With our understated timepieces, the simplest details allow you to tell your own story, one for him or for her. No matter who you are, TONY+WILL has something to suit.

Modern sophistication

Classic Cool **meets**

Galaxy



Astral
Small Astral



Classic
Small Classic

Galaxy

ADJUSTABLE MESH STRAP - TWM011



TWM011A
Gold



TWM011B
Silver



TWM011C
Rose Gold

FULL LEATHER 23.5cm STRAP - TWT011



TWT011A
Gold/Stone



TWT011B
Silver/Black



TWT011C
Rose Gold/Light Pink



TWT011D
Black/Black

The TONY+WILL GALAXY watch, with its classic lines and timeless styling, is a fashion accessory that will impress through the day and into the night.

All TONY+WILL watches are presented in a beautiful gift box.

- Date Function
- 40mm Watch Case, 7.5mm thick
- Full leather 23.5cm Strap - Universal Pin or Stainless Steel Mesh Band - Universal Pin
- Stainless Steel Back Plate
- Japanese Quartz Miyota movement
- 3 Year Warranty
- 3 ATM Water resistant





Astral
Small Astral

Astral



The TONY+WILL Astral leather strapped watch, with its stylish lines and sophisticated looks, is a timepiece that will impress every time it is worn. For daytime or evening wear, it is the must have accessory. All watches are presented in a beautiful gift box.

- 41mm Case
- Leather strap 22.5cm
- Stainless steel Back Plate
- Japanese Quartz movement
- 3 Year warranty

FULL LEATHER 22.5cm STRAP - TWT008



TWT008A
Black/Black



TWT008E
Rose Gold/Light Pink



TWT008G
Gold/Stone



TWT008I
Silver/Black



TWT008J
Gold/Khaki



TWT008K
Rose Gold/Beige



TWT008L
Gold/Navy



TWT008M
Black/Black

Small Astral



The TONY+WILL Small Astral watch, is designed to make an eye-catching statement, with stylish numbers and sophisticated looks, is a timepiece that will impress every time it is worn. For daytime or evening wear, it is the must have accessory.

All watches are presented in a beautiful gift box.

- 36mm Case
- Leather strap 22.5cm
- Stainless steel Back Plate
- Japanese Quartz Miyota movement
- 3 Year warranty

ADJUSTABLE MESH STRAP - TWM009



TWM009A
Gold



TWM009B
Silver



TWM009C
Rose Gold



TWM009D
Gold/Black

FULL LEATHER 22.5cm STRAP - TWT009



TWT009A
Gold/Navt



TWT009B
Gold/Tan



TWT009C
Silver/Black



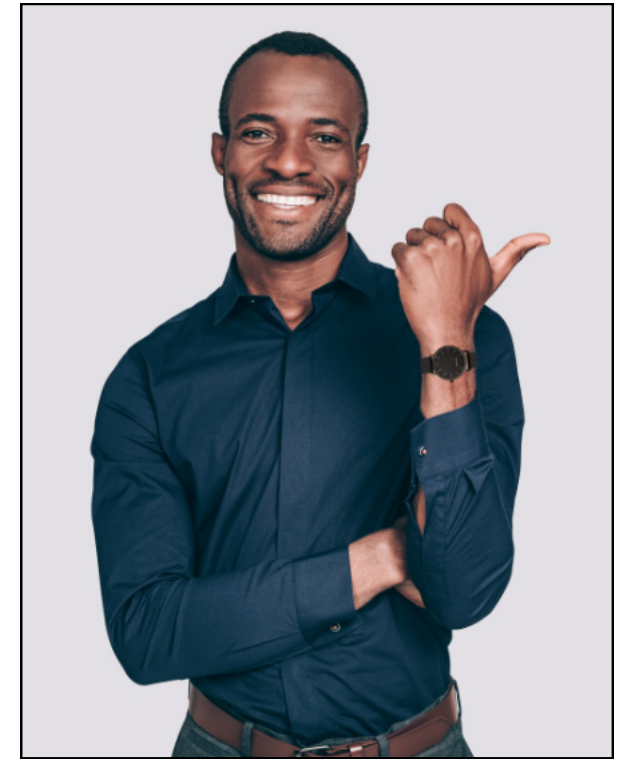
TWT009D
Rose Gold/Light Pink



TWT009E
Rose Gold/Stone



TWT009F
Gold/Khaki



Classic Small Classic



Classic

ADJUSTABLE MESH STRAP - TWM000



The TONY+WILL Classic watch, with its clean lines and simple styling, is a timeless fashion accessory that will impress through the day and into the night. All TONY+WILL watches are presented in a beautiful gift box.

- 42mm Watch Case
- Full leather 23.5cm Strap or Stainless Steel Mesh Band
- Stainless Steel Back Plate
- Japanese Quartz Miyota movement
- 3 Year Warranty



TWM000A
Gold



TWM000C
Silver



TWM000D
Rose Gold

FULL LEATHER 23.5cm STRAP - TWT000



TWT000C
Gun/Tan



TWT000I
Black/Black



TWT000K
Gold/Black



TWT000L
Gold/Navy



TWT000M
Gold/Stone



TWT000N
Gold/Tan



TWT000O
Silver/Black



TWT000P
Silver/Navy



TWT000R
Rose Gold/
Light Pink



TWT000S
Rose Gold/
Black/Black



TWT000V
Silver/Stone



TWT000X
Black/Black

Small Classic

ADJUSTABLE MESH STRAP - TWM004

FULL LEATHER 21.5cm STRAP - TWT004



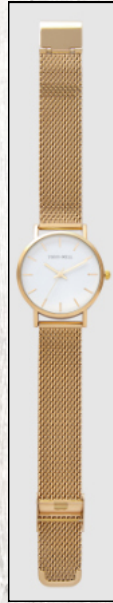
This smaller 36mm TONY+WILL Small Classic watch is a timeless fashion statement. With its clean, simple and stylish lines, it will turn heads day and night, formal or casual.

Presented in a beautiful Gift Box.

- 36mm Watch Case
- Full leather 21.5cm Strap or Stainless Steel Mesh Band
- Stainless Steel Back Plate
- Japanese Quartz Miyota movement
- 3 Year Warranty



TWM004B
Rose Gold



TWM004C
Gold



TWT004B
Silver/White



TWT004E
Black/Black



TWT004F
Black/Tan



TWT004H
Rose Gold/Black



TWT004I
Gold/Stone



TWM004D
Silver



TWM004E
Gold/Black



TWT004J
Silver/Black



TWT004K
Rose Gold/
Light Pink



TWT004M
Gold/Navy



TWT004O
Silver/White



ATLANTIC ACCESSORIES

Created By

Atlantic Accessories

(a division of Symons & Co)

Unit 6 37 Leighton Place Hornsby NSW 2077

ph: 1300 799 187 / 02 9939 6366 / 09 887 0263 (NZ)

e: watches@atlanticaccessories.com.au